

Table RA4: Average Monthly Train Velocity, by Rail Carrier, 2022

Average Train Speed (Kilometres per Hour)

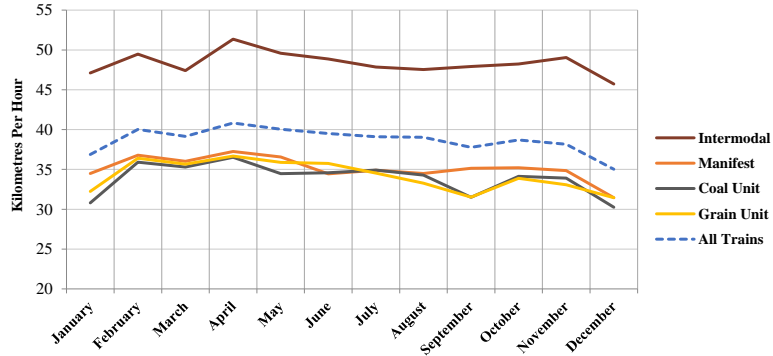
CP

	January	February	March	April	May	June	July	August	September	October	November	December
Intermodal	47.1	49.5	47.4	51.4	49.6	48.9	47.9	47.5	47.9	48.2	49.0	45.7
Manifest	34.5	36.8	36.0	37.3	36.6	34.4	34.9	34.5	35.2	35.2	34.8	31.5
Coal Unit	30.8	35.9	35.3	36.5	34.5	34.6	34.9	34.3	31.5	34.1	33.9	30.3
Grain Unit	32.2	36.4	35.7	36.7	35.9	35.8	34.5	33.3	31.5	33.9	33.1	31.5
All Trains	36.9	40.0	39.2	40.8	40.1	39.5	39.1	39.0	37.8	38.7	38.2	35.0

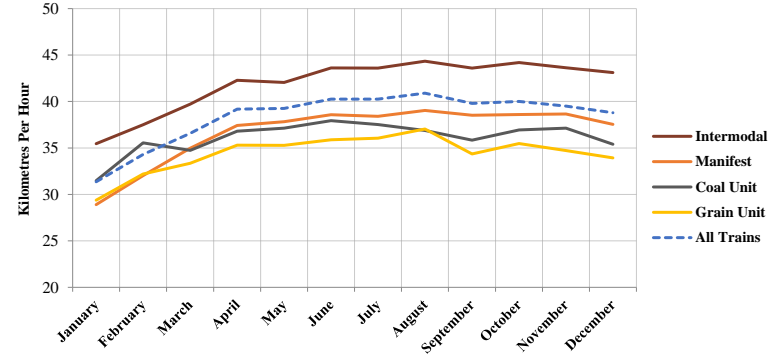
CN

	January	February	March	April	May	June	July	August	September	October	November	December
Intermodal	35.5	37.5	39.7	42.3	42.1	43.6	43.6	44.3	43.6	44.2	43.6	43.1
Manifest	28.9	32.0	35.0	37.4	37.8	38.6	38.4	39.0	38.5	38.6	38.7	37.5
Coal Unit	31.5	35.6	34.8	36.8	37.1	37.9	37.5	36.9	35.9	37.0	37.1	35.4
Grain Unit	29.4	32.2	33.4	35.3	35.3	35.9	36.1	37.0	34.4	35.5	34.7	33.9
All Trains	31.4	34.3	36.6	39.2	39.3	40.3	40.3	40.9	39.8	40.0	39.5	38.8

CP Average Monthly Train Velocity



CN Average Monthly Train Velocity



Notes: CP = Canadian Pacific Railway. CN = Canadian National.

Train velocity measures the line-haul movement from origin to destination. The average velocity is calculated by dividing train-kilometres by total hours operated, excluding yard and local trains, passenger trains, maintenance of way trains. Weekly kilometres per hour are averaged to produce a monthly estimate.

Data and methodology have been revised at source.

Source: Transport Canada, Statistics Canada Table 23-10-0276-01